



New Guard Coatings Group

A global reputation to protect.

The information herewith is given with the best of New Guard Coatings Group knowledge.

Rights are reserved to change and update the data without notice.

This information is not exhaustive and it is the user's responsibility to ensure that this data sheet is the most current by contacting their local New Guard Coatings Group branch prior to using the coating/product.

www.newguardcoatings.com

NORTH • SOUTH EAST • MIDLANDS • NORTH WEST • HULL • SCOTLAND

PRIMER 3296

Dust-repellent acrylic primer, consolidator and adhesion promoter in water dispersion for masonry, render and screeds and when carrying out strengthening and waterproofing work.



WHERE TO USE

Primer 3296 is used to consolidate and improve the surface characteristics of weak, crumbling and dusty substrates. Also suitable for external use to consolidate the surface of cementitious sublayers, render, masonry built from solid bricks, sandstone, tuff and limestone and cement/lime building mortar.

Some application examples

- Surface consolidator for cementitious render, tuff and sandstone.
- Impregnator to eliminate dust from old masonry, vaulted ceilings, etc. and exposed brick masonry.
- Primer for skimming cementitious-based and lime-based skimming and smoothing compound.
- Dust-repellent consolidator for cementitious surfaces.
- Surface consolidator for dusty screeds before installing wood flooring with vinyl adhesive.
- Surface consolidator for substrates before carrying out strengthening work and applying waterproofing products to improve their adhesion.
- For internal use as an impregnator for cementitious grout lines with dusty surfaces to reduce their porosity and absorption.

TECHNICAL CHARACTERISTICS

Primer 3296 is an acrylic polymer-based water-dispersion micronized primer, which gives it its high penetration characteristics, even on surfaces with low porosity.

Primer 3296 consolidates surfaces and eliminates dust and powder on substrates, giving them good mechanical strength.

If it is used as a primer for self-levelling smoothing products, it reduces the formation of pinholes, prevents the product from drying too quickly, helps it to level off and improves its bonding properties to the substrate.

Primer 3296 is an odourless, non-irritating product in water dispersion, suitable for application in areas where there are people present.

Substrates consolidated with **Primer 3296** are not damaged by climatic attack (rain, humidity, sunlight etc.), and the consolidation effect makes them even more long-lasting.

RECOMMENDATIONS

- Do not use **Primer 3296** on surfaces which are not absorbent.
- Do not use **Primer 3296** on damp surfaces or on surfaces subject to rising damp.

- Do not use **Primer 3296** in such an excessive quantity that it is not absorbed by the substrate, in order to avoid the formation of a surface film.
- If wooden flooring is being laid after treatment with **Primer 3296**, use only vinyl adhesives (such as **Adesilex LC/R**). This product is not compatible with two components adhesive and one component polyurethane adhesives.
- If **Primer 3296** is applied in excessive quantities, check the moisture content of the substrate with a carbide hygrometer before proceeding with subsequent bonding and/or smoothing.
- Do not apply **Primer 3296** on anhydrite-based substrate.

APPLICATION PROCEDURE

Preparation of the substrate

The substrates or elements to be treated with **Primer 3296** must be dry, clean, and free of grease, oil, paint and other substances that could impede the necessary penetration of the product.

Application

Use **Primer 3296** diluted 1:1 with water as a consolidating, dust-repellent primer and adhesion promoter when preparing substrates for the following applications.

Restoring masonry:

- to consolidate the surface of all types of absorbent masonry.
- prior to skimming existing render with lime or lime-cement based mortar from the **Mape-Antique FC** or **Mape-Antique NHL ECO Rasante** ranges, **Poromap Finish** or **Planitop** to improve their adhesion.

Structural strengthening work:

- in anti-collapse systems for walls and ceilings using the **Mapewrap EQ System**.
- when strengthening brick/concrete floors with products from the **Planitop HPC Floor** line.

Waterproofing work:

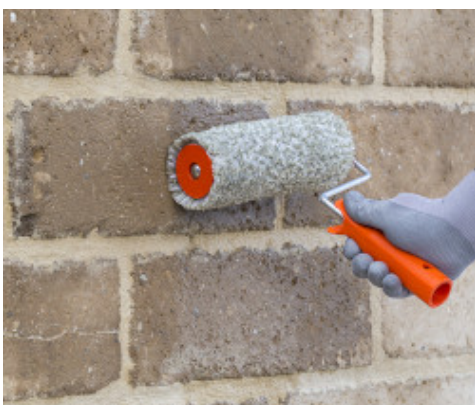
- when creating waterproofing systems, including those resistant to negative lift, with **Mapelastic Foundation** or **Mape-Antique Ecolastic**;

Installation of wood flooring:

- preparing screeds with a dusty surface before installing wood flooring. Spread the mix on the surface to be treated with a broom, large brush or roller. Install the wood flooring with vinyl adhesive (such as **Adesilex LC/R**) after 12-48 hours.

Treating and installing flooring:

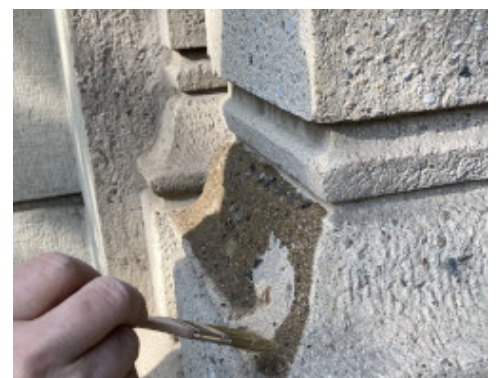
- to make cementitious grout lines more resistant and reduce their porosity and absorbency (internal areas and tiles with a glazed, non-absorbent surface); if the product runs on to the surface of tiles during application, wait for it to penetrate into the grout lines (around 5 to 10 mins.), then clean the flooring with a damp sponge.
- to prepare substrates before applying self-levelling smoothing and skimming compounds. Apply the skimming compound once the primer has set.



Application of Primer 3296 by roller on tuff masonry



Application of Primer 3296 as substrate preparation in the reinforcement of brick concrete slabs with Planitop HPC Floor



Consolidation of architectural element with brush applied Primer 3296

CLEANING

Clean tools and containers immediately after use with water. Dried traces may be removed with **Pulicol**.

CONSUMPTION

The consumption depends on the absorbency and porosity of the surface to be treated. It generally varies between 0.1 and 0,5 kg/m².

PACKAGING

Available in 5 and 10 kg tanks.

STORAGE

Unopened, **Primer 3296** may be stored for up to 12 months in a dry place. Protect from frost.

TECHNICAL DATA (typical values)

PRODUCT IDENTITY

Consistency:	fluid liquid
Colour:	opalescent
Specific gravity (kg/l):	1.01
Dry solids content (%):	15
Brookfield Viscosity # 1, rpm 10 (mPa·s):	20

COMPOSITION AND PROPERTIES OF THE MIXTURE (T = +23°C, R.H. = 50%)

Application temperature:	from +5°C to +35°C
Dilution:	none, 1:1, 1:2 with water depending on the absorption of the substrate
Waiting time before bonding:	12 hours (depending on ambient conditions)
Drying time:	24 hours

SAFETY INSTRUCTIONS FOR PREPARATION AND APPLICATION

Instructions for the safe use of our products can be found on the latest version of the Safety Data Sheet, available from our website www.mapei.com.

PRODUCT FOR PROFESSIONAL USE.

WARNING

Although the technical details and recommendations contained in this product data sheet correspond to the best of our knowledge and experience, all the above information must, in every case, be taken as merely indicative and subject to confirmation after long-term practical application; for this reason, anyone who intends to use the product must ensure beforehand that it is suitable for the envisaged application. In every case, the user alone is fully responsible for any consequences deriving from the use of the product.

Please refer to the current version of the Technical Data Sheet, available from our website www.mapei.com

LEGAL NOTICE

The contents of this Technical Data Sheet ("TDS") may be copied into another project-related document, but the resulting document shall not supplement or replace requirements per the TDS in force at the time of the MAPEI product installation.

The most up-to-date TDS can be downloaded from our website www.mapei.com.

ANY ALTERATION TO THE WORDING OR REQUIREMENTS CONTAINED OR DERIVED FROM THIS TDS EXCLUDES THE RESPONSIBILITY OF MAPEI.

550-6-2023 en (IT)

Any reproduction of texts, photos and illustrations published here is prohibited and subject to prosecution

