



Jotun Protects Property

# *Jotafloor*

**SUPERIOR FLOOR COATINGS**







# Jotafloor

## A Foundation of Success

It often goes unnoticed, but it never goes unused. The floor is the most used object in any environment. Whether in a commercial kitchen, a scientific laboratory, a sidewalk or a parking deck, the flooring is the foundation for success. Quality, longevity and reliability are absolutely critical.

That's why our Jotafloor range of coatings has become a trusted name in floor coatings. Combining leading chemistry with outstanding technical support, the ever-expanding Jotafloor Floor Coating product catalogue offers quality beyond question. This brochure will give you an overview of our products, systems and solutions.

## PRIMERS, SEALERS & FILLERS

Our solutions and systems usually start with Primers, Sealers and Fillers. They are designed to give the best penetration, anchorage and adhesion to Jotun's floor coating solutions for traffic deck areas and industrial flooring requirements.

### Jotafloor Sealer

- Excellent penetration
- Good adhesion
- Low viscosity

#### Usage Areas

- Industrial flooring
- Commercial buildings
- Residential buildings
- Infrastructure
- Car parks

### Jotafloor SF PR 150

- Good flow and leveling
- Solvent free
- Superior anchorage to subsequent coat
- Excellent penetration
- Excellent bond strength

#### Usage Areas

- Industrial flooring
- Commercial buildings
- Residential buildings
- Infrastructure
- Car parks

### Jotafloor Filler Plus

- Superior compressive strength
- Excellent bond strength
- Nonshrink
- Solvent free
- Easy to apply
- DFT: 2 mm up to 10 mm

#### Usage Areas

- Industrial flooring
- Commercial buildings
- Residential buildings
- Infrastructure
- Car parks

### Jotafloor Sealer HS

- Excellent penetration
- Good adhesion
- Low viscosity
- Low VOC

#### Usage Areas

- Industrial flooring
- Commercial buildings
- Residential buildings
- Infrastructure
- Car parks

### Jotafloor Filler

- Superior compressive strength
- Excellent bond strength
- Nonshrink
- Solvent free
- Easy to apply
- DFT: 200 mic up to 3 mm

#### Usage Areas

- Industrial flooring
- Commercial buildings
- Residential buildings
- Infrastructure
- Car parks

### Jotafloor Screed Primer

- Easy to apply
- Good penetration
- Good leveling
- Exceptional strength properties

#### Usage Areas

- Workshops
- Warehouses
- Electrical substations



# TRAFFIC DECK SYSTEMS

Jotafloor traffic deck systems offer the ultimate protection to concrete floors, subject to the long stress produced by the constant wear of vehicular traffic.

## Light Duty

### Jotafloor PU Topcoat

A polyurethane topcoat with high weathering resistance.

- Chemical resistance
- UV resistance
- Abrasion resistance
- Wide range of colours
- Crack bridging

#### Recommended System

1x JF\* Sealer / JF\* Sealer HS / JF\* SF PR 150  
2x JF\* PU TC\* (75 mic each)

#### Recommended Usage Areas

- Car parks
- Commercial buildings
- Residential

### Jotafloor PU Topcoat HS

A LEED compliant polyurethane topcoat with high weathering resistance.

- Low VOC
- Chemical resistance
- UV resistance
- Abrasion resistance
- Wide range of colours
- Crack bridging

#### Recommended System

1x JF\* Sealer / JF\* Sealer HS / JF\* SF PR 150  
2x JF\* PU TC\* HS (75 mic each)

#### Recommended Usage Areas

- Car parks
- Commercial buildings
- Residential



Note: For textured finish and a non-slip property, kindly broadcast Jotafloor non-slip aggregates. Kindly contact your Jotun representative for more details on such systems.

TC\* : Topcoat  
JF\* : Jotafloor

## Medium Duty

### Jotafloor EPC 300 PLUS

A solvent free self-smoothing epoxy coating that can be applied directly to concrete.

- Superior mechanical properties
- Easy application
- Multiple usage areas

#### Recommended System

1x JF\* Sealer / JF\* Sealer HS / JF\* SF PR 150  
2x JF\* EPC 300 PLUS (200 mic each)

#### Recommended Usage Areas

- Car parks
- Warehouses
- Showrooms
- Service centers
- Back of house areas
- Laboratories
- Mechanical rooms



## Heavy Duty

### Jotafloor Glass Flake HS

High solids reinforced epoxy coating, suitable for rubber tyres up to 20 tons load.

- Superior mechanical properties
- Crack bridging
- Chemical resistance

#### Recommended System

1x JF\* Sealer / JF Sealer HS / JF\* SF PR 150  
1x JF\* GF HS (300 mic each)

#### Note:

- For ramps: DFT to be 400 mic / coat
- For External floors: Add 2 coats of JF\* PU TC\* (75 mic each)

#### Recommended Usage Areas

- Car parks
- Workshops
- Garages
- Loading bays

### Jotafloor PU Universal

An intermediate waterproof polyurethane membrane.

- Water resistance
- Abrasion resistance
- Crack bridging
- Low VOC

#### Recommended System

1x JF\* SF PR 150  
1x Non-slip aggregate - Medium  
1x JF\* PU Universal (500 mic - 1 mm)  
2x JF\* PU TC\* / JF\* PU TC\* HS (75 mic each)

#### Recommended Usage Areas

- Car parks
- Commercial buildings
- Service centers
- Cold storage



# INDUSTRIAL FLOORING SOLUTIONS

Jotafloor Industrial Flooring Solutions offer a range of products that protect and extend the life of your floors. The solutions have protective qualities which safeguard against chemical spills, heavy loads, traffic, abrasions and other impacts, whilst providing a wide range of colours that are aesthetically pleasing.

## Light Duty

### Jotafloor Rapid Dry

A fast drying alkyd coating for light duty traffic.



#### Recommended System

2x JF\* Rapid dry (45 mic each)

#### Recommended Usage Areas

- Light Duty floors
- Exhibition halls
- Walkways

### Jotafloor Topcoat

Light duty epoxy coating.

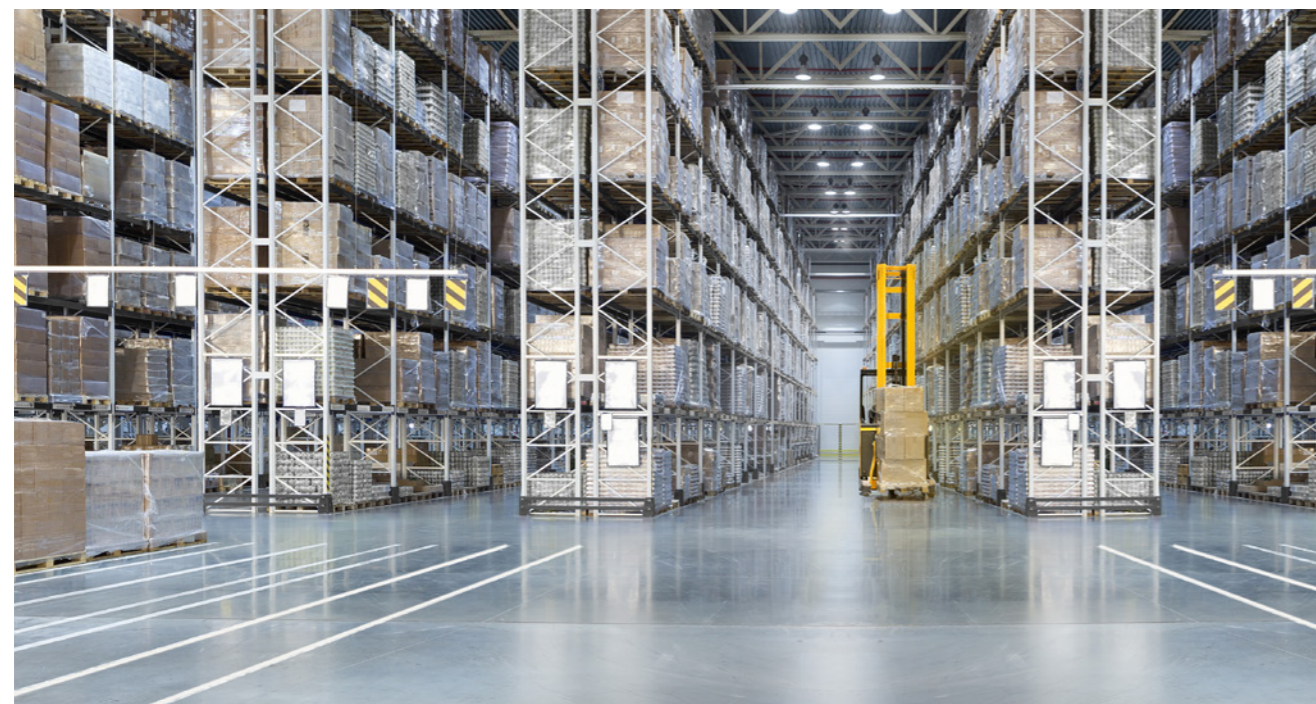


#### Recommended System

1x JF\* Sealer / JF\* Sealer HS  
2x JF\* TC\* (60 mic each)

#### Recommended Usage Areas

- Walkways
- Staircases
- Residential



Note: For textured finish and a non-slip property, kindly broadcast Jotafloor non-slip aggregates. Kindly contact your Jotun representative for more details on such systems.

TC\*: Topcoat  
JF\* : Jotafloor

## Light & Medium Duty

### Jotafloor Topcoat E

LEED compliant epoxy coating, applicable on floors and walls and available in clear version also.



#### Recommended System

##### For Light duty:

1x JF\* Sealer / JF\* Sealer HS / JF\* SF PR 150  
2x JF\* TCE (150 mic each)

##### For Medium Duty:

1x JF\* Sealer / JF\* Sealer HS / JF\* SF PR 150  
2x JF\* TCE (250 mic each)

#### Recommended Usage Areas

- Showrooms
- Back of house areas
- Staircases
- Plant rooms
- Entertainment arenas

## Medium Duty

### Jotafloor EPC 300 PLUS

A solvent free self smoothing EP coating that can be applied directly to concrete, withstands up to 10 tons load.

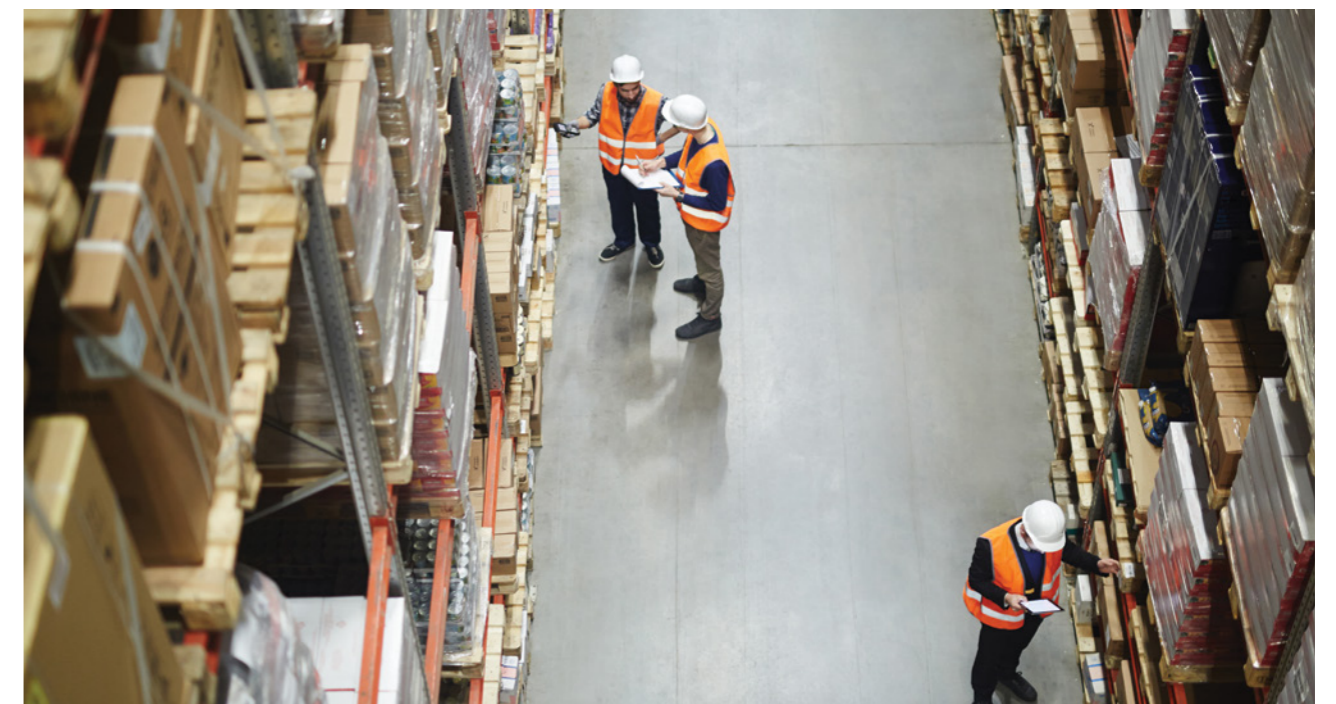


#### Recommended System

1x JF\* Sealer / JF\* Sealer HS / JF\* SF PR 150  
2x JF\* EPC 300 PLUS (200 mic each)

#### Recommended Usage Areas

- Car parks
- Warehouses
- Showrooms
- Service centers
- Back of house areas
- Laboratories
- Mechanical rooms





### Heavy Duty

#### Jotafloor Glass Flake HS

High solids reinforced epoxy coatings, suitable for rubber tyres, up to 20 tons load.

-  Superior mechanical properties
-  Crack bridging
-  Chemical resistance

#### Recommended system

1x JF\* Sealer / JF\* Sealer HS / JF\* SF PR 150  
1x JF\* GF HS (300 mic each)

**Note :**  
• For External floors:  
Add 2 coats of JF\* PU TC\* (75 mic each)

#### Recommended Usage Areas

- Car parks
- Workshops
- Garages
- Loading bays

#### Jotafloor EP SL

A solvent free self leveling epoxy coating, withstands rubber, nylon and metal tyres, up to 30 tons load.

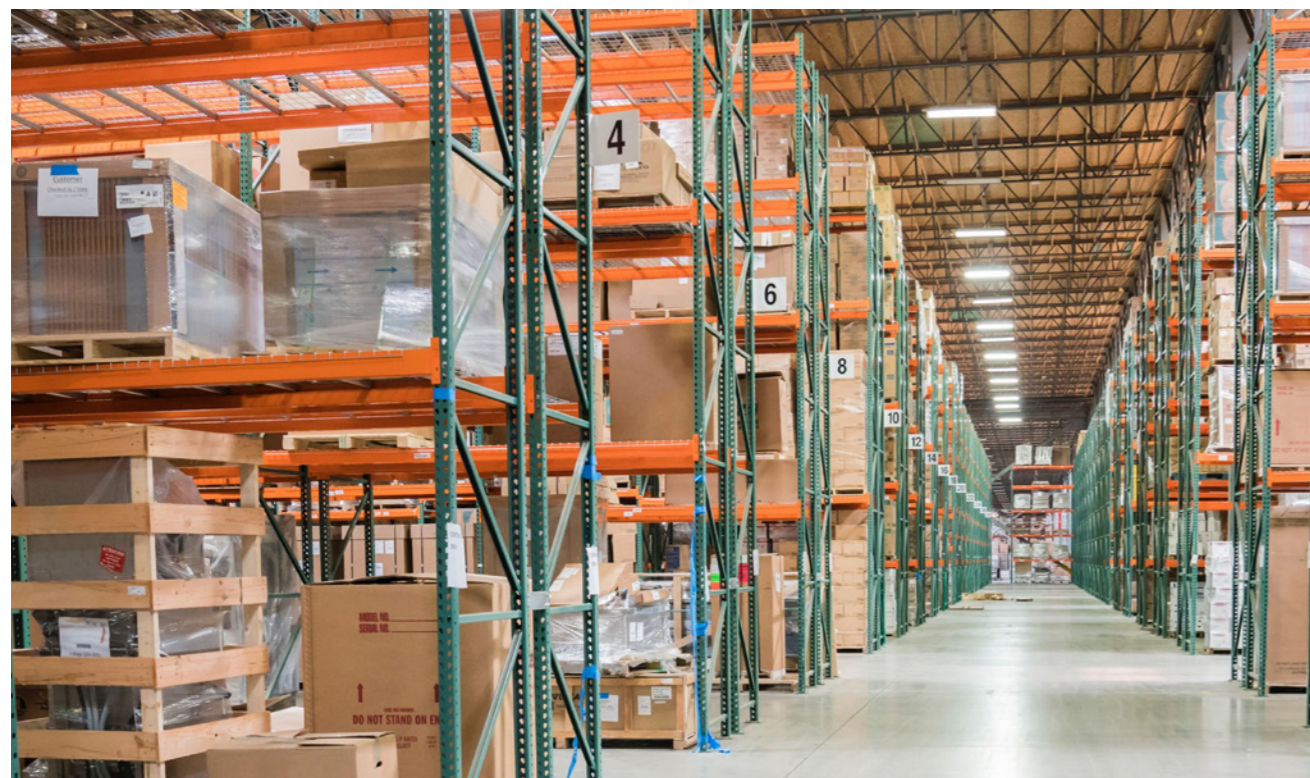
-  Superior mechanical properties
-  Abrasion resistance
-  Impact resistance
-  Easy Maintenance
-  Low VOC

#### Recommended System

1x JF\* SF PR 150  
1x JF\* EP SL (1.5 mm up to 5mm)

#### Recommended Usage Areas

- Workshops
- Warehouses
- Factories
- Airports & hangars
- Laboratories
- Power plants



### Very Heavy Duty

#### Jotafloor Screed

An intermediate solvent free epoxy screed withstands up to 50 tons load.

-  Impact resistance
-  Low VOC
-  Superior mechanical properties

#### Recommended System

1x JF\* Screed primer (150 mic)  
1x JF\* Screed (5000 mic)  
2x JF\* TCE (150 mic each)






#### Recommended Usage Areas

- Workshops
- Warehouses
- Electrical substations



#### Jotafloor PU Crete

A hygienic hybrid polyurethane coating designed for the process industry.

-  Superior mechanical properties
-  Anti microbial
-  Swift installation technology
-  Temperature resistance
-  Slip resistance

#### Recommended System

1x JF\* PU CRETE (1 mm scratch coat)  
1x JF\* PU CRETE (3 mm - 5 mm)

#### Recommended Usage Areas

- Process industry
- Cold storages
- Industrial kitchens
- Food & Beverage industry
- Pharmaceutical industry
- Cosmetics industry





## WE'VE GOT YOU COVERED

At Jotun, our aim is to do more than just sell you a superior performing product. Our Jotafloor solutions come with our highly skilled technical support team, that will be there from start to finish and beyond, making sure the product is delivered exactly the way it is designed.

Our technical support is what makes Jotun your preferred go-to supplier, providing you the freedom to take on any project without worrying about floor coatings.

With our track record of global market experience, we can also partner with you to provide solutions that meet your operational goals. Please get in touch with your local representative so that we can tailor a solution that's right for you. We've got you covered!

[JOTUNPROFESSIONALS.COM](http://JOTUNPROFESSIONALS.COM)



Jotun Protects Property