



JOTUN

PROTECTIVE COATINGS

BRINGING NEW DIMENSIONS TO ANTICORROSIVES

THE ADVANCED

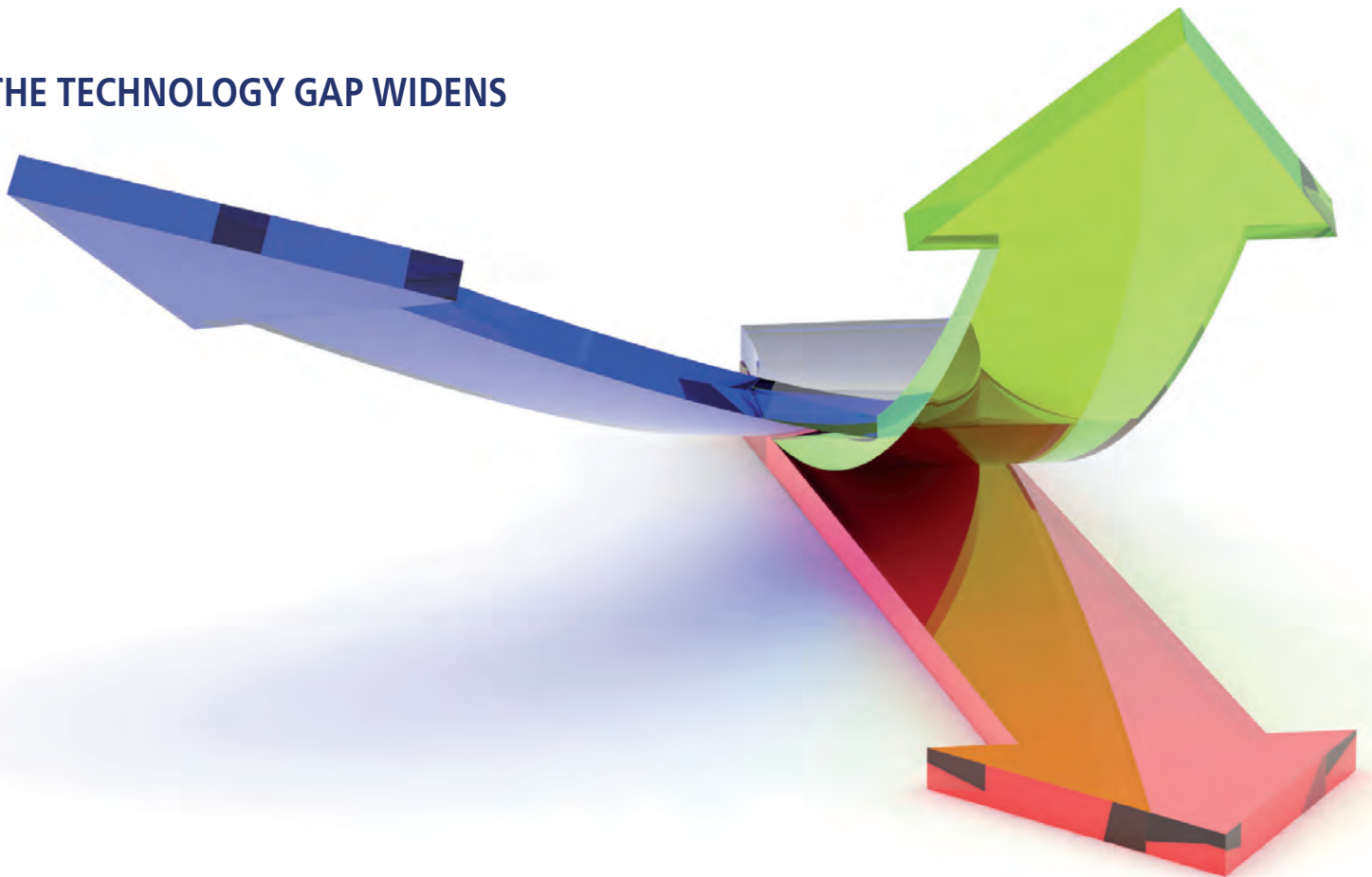
Jotamastic

RANGE

THE ADVANCED
Jotamastic
RANGE

THE SOLUTIONS BROADEN

THE TECHNOLOGY GAP WIDENS



THE PROTECTION DEEPENS

BRINGING NEW DIMENSIONS TO ANTICORROSIVES

In an ideal world, steel substrates at maintenance would be prepared to Sa 2½. In reality, costly downtime, restricted budgets and complex structures with difficult to reach areas can mean blast cleaning is not an option.

The new generation of the Jotamastic range offers tailored solutions to meet any challenge.

● THE TECHNOLOGY GAP WIDENS

The latest advances in Jotun's market leading mastics technology further improve the anticorrosive protective properties of the Jotamastic range.

With more than 25 years' experience and continuous growth, the Jotamastic range has established itself as the leading surface tolerant repair and maintenance primers.

During this period the valuable insights provided by continuous customer feedback have contributed towards the development of the new Jotamastic range.

The expanded range combines modern technology to provide a step change in high-tech surface tolerant coating solutions.

● THE SOLUTIONS BROADEN

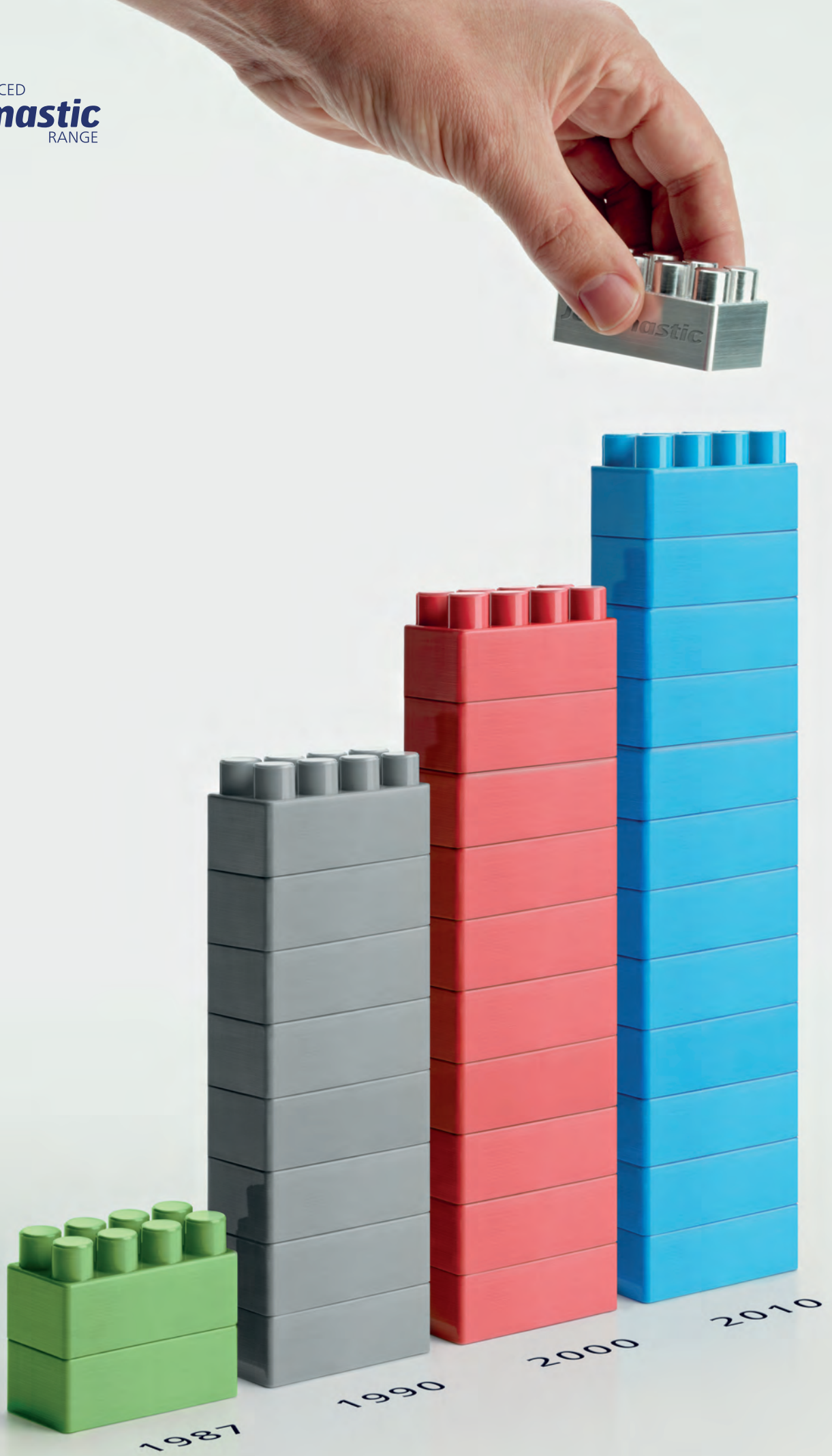
Each product in the Jotamastic range offers specific benefits to cater for the client's exact needs. This expanded range allows anticorrosive systems to be tailor-made to meet your specific requirements for the most effective, durable and sustainable solution.

● THE PROTECTION DEEPENS

This new generation of Jotamastic products embodies Jotun's technical knowledge and long experience in solving the special challenges presented in the protection of steel substrates for repair or maintenance. High surface tolerance and wetting properties give deep penetration and thus better adhesion and durability in harsh environments, combined with a wider choice of solutions.



THE ADVANCED
Jotamastic
RANGE



1.2 BILLION SQUARE METRES PROTECTED

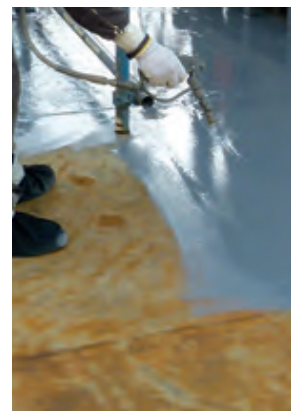
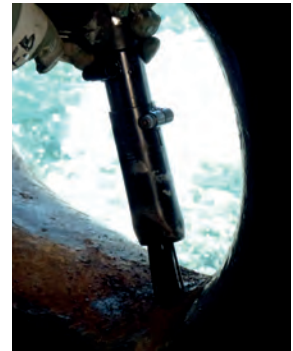
25 YEARS' SUCCESS, DEVELOPMENT AND EXPERIENCE

The extensive range of Jotamastic coatings has been developed to provide a variety of solutions for repair and maintenance. Each product is designed to offer specific benefits. A Jotamastic anticorrosive system can be tailor-made to meet specific requirements for exposure and durability.

- Jotamastic requires no blast cleaning – reducing time and cost with no compromise in protection
- Jotamastic can be applied on most clean and sound surfaces – reducing downtime
- Jotamastic, the optimal solution for difficult to reach areas, where good surface preparation is not possible or desirable
- Jotamastic can be used over most generic types of coatings

The expanded Jotamastic range further enhances the opportunities to achieve even better economy and standards of corrosion protection.

Ease of use and simplicity makes Jotamastic the applicators' preferred brand.



*Key benefits of Jotamastic products:
apply to hand tool, power tool or waterjetting
prepared surfaces, even areas that appear dry but may
be moist.*



MARKET LEADING FEATURES

● LOWER SURFACE PREPARATION

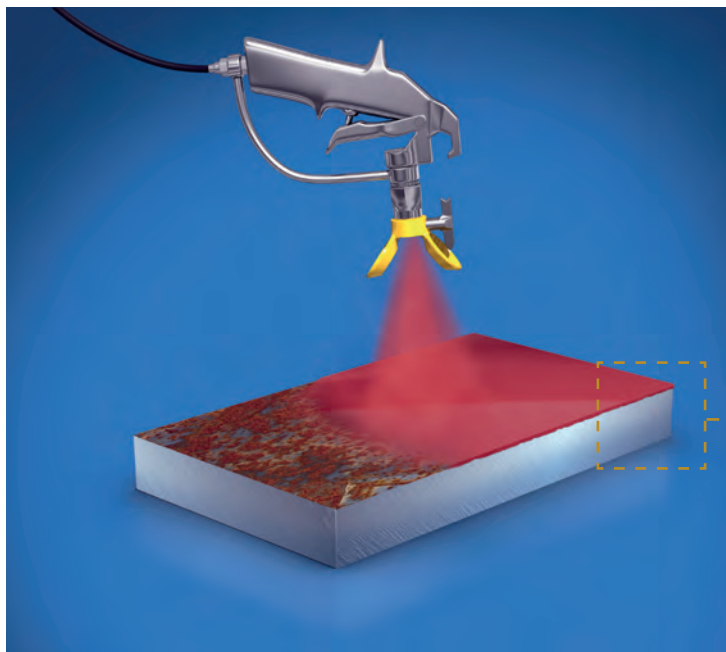
- Apply on any clean and sound substrate prepared to minimum St 2
- Apply on early flash rusting and waterjetting prepared surfaces

● SIMPLY THE BEST SURFACE TOLERANCE

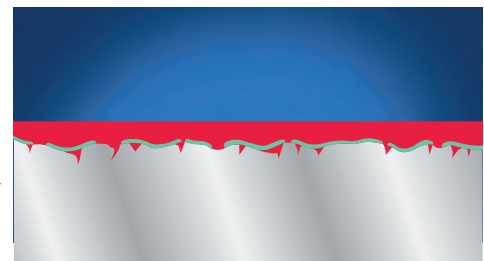
- Use of hydrocarbon resin gives excellent wetting properties ensuring good penetration into substrate
- Fast and easy application with less surface preparation

● GOOD MOISTURE TOLERANCE

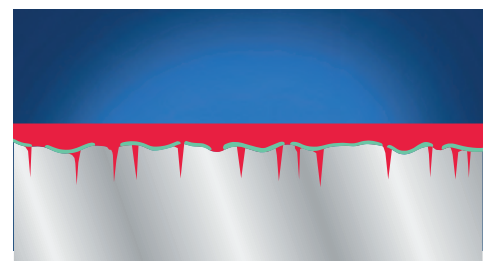
- Apply on surfaces that appear dry but where moisture remains and flash rusting has begun
- Superior barrier effect minimises permeability
- Application friendly and easy to use



1. Jotamastic is applied to an aged coating in sound condition prepared to minimum St 2 (or even moist). Waterjetting prepared surfaces with early flash rust are acceptable.
Good flow properties mean a smooth, consistent protective film.
Low surface tension gives excellent wetting properties.



2. Enlarged section through the coated substrate shows Jotamastic penetrating down into the aged sound surface.



3. This section shows how Jotamastic, having penetrated deep into the substrate, converts from a liquid coating into a solid film.

THE ADVANCED
Jotamastic
RANGE



THE SOLUTIONS BROADEN

THE CORE PRODUCTS

Jotamastic | 90

Improved corrosion resistance

- Offers the longest lifetime in any environment
- Exceptional corrosion resistance
- Optimised rheology improves surface tolerance, flow levelling and application properties
- Excellent adhesion to most traditional and modern topcoats, including WaterFine and isocyanate free

Improved systems efficiency

- Fast drying, greatly improving efficiency
- Designed to be applied from 100 to 300 microns in a single coat
- Safe application over a wide temperature and humidity range

Increased colour flexibility

- Wide colour flexibility using Jotun's MCI system
- Colour match primer with topcoat improving coverage
- Colour availability on small orders

Additional benefits

- Can be used as finished coat in areas with low UV exposure or where colour retention is not the primary focus
- NORSOK approved
- Easy application by spray or roller

Jotamastic | 87

- For severe environments and long lifetime
- The original market leader in epoxy mastic technology
- Apply on sound surfaces prepared to St 2
- Designed to be applied from 150 to 300 microns in a single coat
- Applicator friendly and easy to use
- NORSOK approved

Jotamastic | 80

- Excellent protection in less severe environments
- Low film thickness version
- Designed to be applied from 75 to 200 microns in a single coat
- Provides all the benefits of Jotamastic products and the same excellent protection but at lower dry film thicknesses
- Jotamastic 80 is built on the same technology platform as Jotamastic 87

Jotamastic | SF

- Solvent free
- Same exceptional corrosion resistant properties for which the other Jotamastic products are well known
- Excellent edge covering properties
- Good early water resistance
- High solids content – a good solution where hot works in confined spaces are performed and where danger of explosion can be an issue

THE ADVANCED
Jotamastic
RANGE



THE SOLUTIONS BROADEN

SPECIAL USAGE PRODUCTS

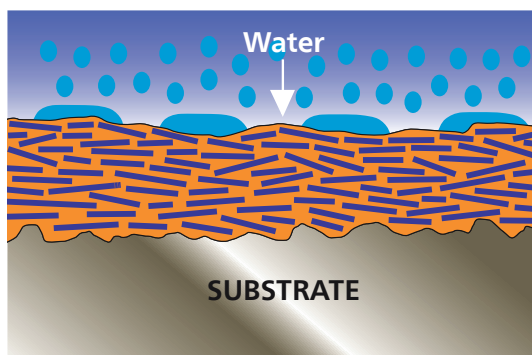
Jotamastic | 90 AL

Jotamastic | 87 AL

Jotamastic | 80 AL

EXTRA PROTECTION IN EXTREME ENVIRONMENTS

- The addition of aluminium flakes provides extreme corrosion protection and exceptional water retention
- Aluminium flakes within the coatings create an impenetrable barrier to water and increased coating flexibility. The epoxy binds the coating together to give it considerable strength, particularly when applied to vulnerable areas
- The aluminium range is particularly suited for submerged areas



Jotamastic | SMARTPACK

FOR BRUSH AND ROLLER APPLICATION

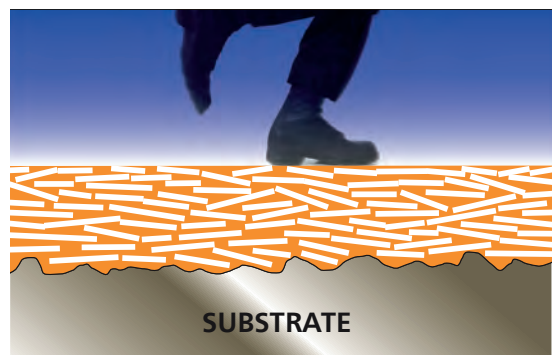
- The best corrosion protection when using brush and roller
- Improved flow properties means smoother, better protective film
- Easy to handle, less storage space, reduced inventory, less waste handling
- Fast recoating from 0°C to 40°C with one curing agent

Jotamastic | 90 GF

Jotamastic | 87 GF

FOR THE TOUGHEST WEAR & TEAR SURFACES

- Glass flakes within the coating overlap, blend and bind together to provide a tough, virtually impermeable film
- A unique surface tolerant, abrasion resistant coating, containing glass flakes providing hard wearing resistance
- Specially suitable for surfaces exposed to considerable wear and tear such as high traffic areas
- Suitable for high traffic areas where speed of maintenance is essential



Two 5 litre tins, simply mix 1:1.

Reduce wastage by over 50% by mixing only what you need. Easy to follow visual mixing instructions are on the lids. Easy to handle.



INVEST TODAY FOR FUTURE RETURNS

REDUCED LIFE CYCLE COST

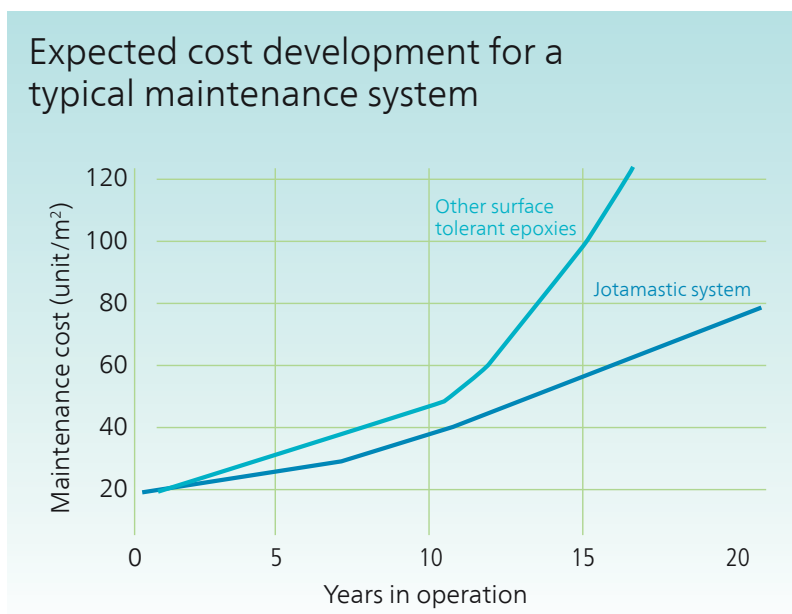
Achieve long term financial benefits

Investment in corrosion protection is about calculating the costs over the design life of the project – Life Cycle Cost analysis (LCC) – the investment in new construction today and maintenance in the future.

There are many different factors to be considered when choosing a protective paint system:

- The cost per square metre at maintenance is higher than at new construction
- Different coatings have different durability
- The longer the lifetime of a coating the greater potential for savings
- It is false economy to calculate only the cost per square metre of the paint. It is essential to take all other costs into account – surface preparation, scaffolding, application, material and other costs for the lifetime of the structure.

LCC analysis proves that specifying a Jotamastic based system produces substantial financial benefits.



THE ADVANCED
Jotamastic
RANGE



OFFSHORE

Offshore installations operate in all kinds of environments ranging from tropical to arctic. In these demanding environments on board maintenance is often a challenge requiring a surface tolerant and durable coating solution.

The Jotamastic range of products offers tailor-made solutions to resolve these situations.

KEY JOTAMASTIC PRODUCTS

Jotamastic | 90

- Problem solver in all environments, offering the widest range of benefits
- Colour flexible
- Fast drying
- Safe overcoating with virtually any topcoat



Jotamastic | SF

- Solvent free, high build epoxy primer
- Excellent edge covering
- Good early water resistance
- Safe application in confined spaces

Jotamastic | SMARTPACK

- The best product for brush and roller application
- Reduce paint consumption by up to 50%
- 1:1 mixing ratio. Mix only what you need

AREAS	TYPICAL SYSTEMS		
	No. coats	DFT μm	
<ul style="list-style-type: none"> • Carbon steel with operating temperature <120°C • Structural steel • Exteriors of equipment, vessels, piping and valves 	2	x 125	Jotamastic 90
	1	x 60	Hardtop XP
<ul style="list-style-type: none"> • Structural carbon steel with operating temperature $\leq 80^\circ\text{C}$ in internal and fully dry and ventilated areas 	1	x 150	Jotamastic 90
	1	x 60	Hardtop XP
<ul style="list-style-type: none"> • Helicopter deck 	1	x 200	Jotamastic 90
	1	x 1000	Jota Armour
<ul style="list-style-type: none"> • Pipes and valves 	2	x 125	Jotamastic 90
	1	x 60	Hardtop XP
<ul style="list-style-type: none"> • Submerged carbon steel and carbon steel in the splash zone 	2	x 200	Jotamastic SF
<ul style="list-style-type: none"> • Walkways, escape routes and lay down areas 	2	x 200	Jotamastic 90 GF
	1	x 60	Hardtop XP
<ul style="list-style-type: none"> • Brush / roller application 	1	x 60	Jotamastic Smart Pack, number of coats required to reach specified dft Hardtop XP

THE ADVANCED
Jotamastic
RANGE



HYDROCARBON PROCESSING INDUSTRY (HPI)

Jotun has over 25 years' experience in the Hydrocarbon Processing Industry (HPI) with millions of square metres protected and hundreds of projects completed including oil refineries, petrochemical and gas processing plants.

The dangers present at a hydrocarbon processing plant mean it is not always possible or practical to use airless spray application in everyday maintenance. Brush and roller application is therefore the preferred solution during normal operation. In the development of the Jotamastic range, Jotun has recognised that different plants have different needs:

KEY JOTAMASTIC PRODUCTS

Jotamastic | 90

- Problem solver in all environments, offering the widest range of benefits
- Colour flexible
- Fast drying
- Safe overcoating with virtually any topcoat

Jotamastic | 80

- Excellent protection for less severe environments
- Relevant protection at the correct cost
- Excellent flow levelling at lower film thickness

Jotamastic | SF

- Solvent free, high build epoxy primer
- Excellent edge covering
- Good early water resistance
- Safe application in confined spaces

Jotamastic | SMART PACK

- The best product for brush and roller application
- Reduce paint consumption by up to 50%
- 1:1 mixing ratio. Mix only what you need

AREAS	TYPICAL SYSTEMS		
	No. coats	DFT µm	
<ul style="list-style-type: none"> • Structural steel with operating temperature <120°C • Exteriors of racks, vessels, pipings and valves 	2	x 125	Jotamastic 80
	1	x 60	Hardtop XP
<ul style="list-style-type: none"> • Tank exterior 	2	x 125	Jotamastic 80
	1	x 60	Hardtop XP
<ul style="list-style-type: none"> • Jetties, structural steel 	2	x 125	Jotamastic 90
	1	x 60	Hardtop XP
<ul style="list-style-type: none"> • Jetties, piles 	2	x 250	Jotamastic 87 GF
<ul style="list-style-type: none"> • Splash zone, confined spaces 	2	x 200	Jotamastic SF
<ul style="list-style-type: none"> • Brush / roller application 	1	x 60	Jotamastic Smart Pack, number of coats required to reach specified dft Hardtop XP

THE ADVANCED
Jotamastic
RANGE



ENERGY

In more than 1800 power installations world-wide, structures totalling 65,000,000 square metres in area are currently protected by Jotun.

These assets represent substantial investments and are of great importance to society. They therefore need to be maintained to high standards with a minimum of unplanned maintenance stops. The advanced Jotamastic range has been specially developed to meet many of these challenges.

KEY JOTAMASTIC PRODUCTS

Jotamastic | 90

- Problem solver in all environments, offering the widest range of benefits
- Colour flexible
- Fast drying
- Safe overcoating with virtually any topcoat

Jotamastic | 80

- Excellent protection for less severe environments
- Relevant protection at the correct cost
- Excellent flow levelling at lower film thickness

Jotamastic | SF

- Solvent free, high build epoxy primer
- Excellent edge covering
- Good early water resistance
- Safe application in confined spaces

Jotamastic | SMARTPACK

- The best product for brush and roller application
- Reduce paint consumption by up to 50%
- 1:1 mixing ratio. Mix only what you need

AREAS	TYPICAL SYSTEMS			
	No. coats		DFT μm	
HYDRO POWER STATION	2	x	150	Jotamastic 90 Aluminium
	1	x	250	Jotamastic 90 Aluminium
	1	x	50	Hardtop XP
THERMAL POWER PLANT	1	x	80	Jotamastic 80
	1	x	80	Penguard FC
	1	x	135	Jotamastic 90 Aluminium
	1	x	135	Jotamastic 90
	1	x	50	Hardtop XP
WIND TURBINE	1	x	60	Jotamastic 90 Aluminium
	1	x	60	Hardtop XP
	1	x	200	Jotamastic 90
General maintenance	Brush / Roller application 1 x T/U Jotamastic Smart Pack			

THE ADVANCED
Jotamastic
RANGE



INFRASTRUCTURE

Infrastructure refers to the basic physical and organisational structures needed for the operation of a society or enterprise. Projects include bridges, buildings, airports, ports & harbours, jetties, waste water treatment plants, storage tanks and desalination plants. The challenge with an infrastructure project is that it covers almost all corrosivity grades and substrates. The Jotamastic range is tailored to meet the specific repair and maintenance needs for any structures.

KEY JOTAMASTIC PRODUCTS

Jotamastic | 90

- Problem solver in all environments, offering the widest range of benefits
- Colour flexible
- Fast drying
- Safe overcoating on virtually any topcoat

Jotamastic | 80

- Excellent protection for less severe environments
- Relevant protection at the correct cost
- Excellent flow levelling at lower film thickness

Jotamastic | SF

- Solvent free, high build epoxy primer
- Excellent edge covering
- Good early water resistance
- Safe application in confined spaces

AREAS	TYPICAL SYSTEMS		
	No. coats		DFT μm
• Steel structures internal	1 x		100
	1 x		60
• Steel structures external	2 x		100
	1 x		60
• Fuel tank exterior	2 x		125
	1 x		60
• Water tank interior	2 x		250
• Bridge external steel structures	2 x		150
	1 x		60
• Bridge internal steel void spaces	1 x		150
• Bridge steel piers and piles, external structures, splash zone	2 x		250



UNIFORM STANDARD OF GLOBAL SERVICE

GLOBAL SERVICE

- Highest number of technical personnel in the industry
- Same high standard of trained personnel globally
- Easy to exchange trained technical personnel across national borders and multi-national projects

STANDARDISED

- Same tools, reports, procedures and behaviour world-wide.
- Same competence in maintaining company standard procedures
- Recognised globally by our yellow and red boiler suits

COATING ADVISOR ACADEMY

- Compulsory training for all technical personnel worldwide
- Theoretical and practical training, testing and examination
- FROSIO and NACE certification
- First aid and fire-fighting



TRAINED TO DELIVER THE BEST RESULT

Jotun Marine Coatings and Jotun Protective Coatings offices worldwide

Legal Jotun entities worldwide are listed. For details of Branch offices and Jotun representation in countries not listed, please visit jotun.com

AUSTRALIA

Jotun Australia Pty. Ltd.,
P.O. Box 105, Altona North,
9 Cawley Road,
BROOKLYN, VIC 3025
Tel: +61 3 9314 0722
Fax: +61 3 9314 0423

BRAZIL

Jotun Brasil Ltda.
Estrada Ademar Ferreira Torres 250
Caluge - Itaboraí (RJ) CEP 24808-520
RIO DE JANEIRO
Tel: +55 21 3147 3850
Fax: +55 21 3147 3861

CYPRUS

Jotun Cyprus Ltd.
56 Theodorou Potamianou
Aphrodite Court, 1st Floor
4155, Kato Polemida
LIMASSOL
Tel: +357 25 374455 / 374440 / 374477
Fax: +357 25 374400

P.R. of CHINA

Jotun Coatings (Zhangjiagang) Co. Ltd.
Jotun COSCO Marine Coatings
(Qingdao) Co. Ltd.
Floor 20, Jiu Shi Mansions,
No. 28 Zhong Shan Road (South)
SHANGHAI 200010
Tel: +86 21 6333 080 0
Fax: +86 21 6326 968 6

Jotun Coatings (Zhangjiagang) Co. Ltd.
Jotun COSCO Marine Coatings
(Qingdao) Co. Ltd.
Room 1901-1902, 1908 Pearl River
Tower, NO. 15, Zhujiang West Road,
Tianhe District,
GUANGZHOU, 510620
Tel: +86 20 38 78 07 49
Fax: +86 20 38 78 19 66

HONG KONG

Jotun COSCO Marine Coatings (H.K.) Ltd
Room 902, 9/F,
101 King's Road, North Point
HONG KONG
Tel: +852 2527 6466
Fax: +852 2861 1307

DENMARK

Jotun Danmark A/S Jotun Coatings
Columbusevej 5, 2860 Søborg,
COPENHAGEN
Tel: +45 4492 9400
Fax: +45 4492 9401

EGYPT

El Mohandes Jotun S.A.E.
Plot 193, Second District,
City Center, Fifth Settlement,
NEW CAIRO
Tel: +202 2614 9999
Fax: +202 2614 9998

FINLAND

Nor-Maali OY
Vanhatie 20, 15240 LAHTI
Tel: +358 3 874 650
Fax: +358 3 874 6550

FRANCE

Jotun France S.A.S.
22-24 rue du Président Wilson
92300 LEVALLOIS PERRET
Tel: +33 1 45 19 38 80
Fax: +33 1 45 19 38 94

GERMANY

Jotun (Deutschland) GmbH
Haferweg 38
22769 HAMBURG
Tel: +49 40 851 960
Fax: +49 40 856 234

GREAT BRITAIN

Jotun Paints (Europe) Ltd.
Stather Road, Flixborough,
SCUNTHORPE DN15 8RR
Tel: +44 1724 400 000
Fax: +44 1724 400 100

GREECE

Jotun Hellas Ltd.
33, Zeppou Street,
Glyfada
ATHENS 16675
Tel: +30 210 42 85 980-82
+30 210 42 86 035-37
Fax: +30 210 42 85 983/
+30 210 42 87 237

INDIA

Jotun India Pvt Ltd.
502, 5th Floor,
Boston House,
Suren Road,
Behind Cinemax Theatre,
Andheri East,
Mumbai - 400 093
Tel: +91 22 2822 4600
+91 22 2820 5900 (+fax)
Fax: +91 22 2820 5900

INDONESIA

P.T. Jotun Indonesia
Kawasan Industri MM2100
Blok KK-1, Cikarang Barat
Bekasi 17520
Tel: +62 21 8998 2657
Fax: +62 21 8998 2658

IRELAND

Jotun (Ireland) Ltd.,
Unit K7, Marina Commercial Park,
Centre Park Road, CORK
Tel: +353 214 965955
Fax: +353 214 965992

ITALY

Jotun Italia S.P.A.
Via Petronio, 8, Zona Ind. Noghese
34147 - MUGGIA (TRIESTE)
Tel: +39 040 23 98204
Fax: +39 040 23 98222

JAPAN

NKM Coatings Co., Ltd.
12-1, Minamirokugo 3-chome,
Ota-ku,
TOKYO 144-0045
Tel: +81 3 6758 2212
Fax: +81 3 6758 2213

KOREA (SOUTH)

Chokwang-Jotun Ltd.
30th Block Jisa Science Park,
1205 Jisa-dong, Gangseo-gu,
BUSAN 618-230
Tel: +82 517 976 000
Fax: +82 517 117 735

LIBYA

Jotun Libya J.S.Co
Almumtaz Co. S.A. (Jotun).
Aalseka Street
P.O. Box 6850
TRIPOLI
Tel: +218 214777811
Fax: +218 214780718

MALAYSIA

Jotun Paints (Malaysia) Sdn. Bhd.
Lot 7 Persiaran Perusahaan,
Section 23, P.O. Box 7050
40700 SHAH ALAM
Tel: +60 351 235 500
Fax: +60 351 235 632

THE NETHERLANDS

Jotun B.V.
Postbus 208
3200 AE SPIJKENISSE
Visiting address:
Curieweg 11b, 3208 KJ Spijkenisse
ROTTERDAM
Tel: +31 181 678 300
Fax: +31 181 617 899

NORWAY

Jotun A/S
P.O. Box 2021,
3202 SANDEFJORD
Visiting address:
Hystadveien 167, 3209 Sandefjord
Tel: +47 33 45 70 00
Fax: +47 33 45 79 00

OMAN

Jotun Paints Co. LLC
Rusayl Ind. Estate, Road No.10
P.O. Box 672 Code 111, MUSCAT
Tel: +968 2444 6100
Fax: +968 2444 6105

PAKISTAN

Jotun Pakistan (Pvt.) Ltd.
2KM Defence Road, Off 9KM Raiwind
Road, Adjacent Valencia Homes Gate
LAHORE 544770
Tel: +92 423 532 350 0-3
Fax: +92 423 532 1387

PHILIPPINES

Jotun (Philippines) Inc.
846 West Service Road, Km.18
South Super Highway
Paranaque City,
METRO MANILA 1714
Tel: +63 2239 1032-34
Fax: +63 2822 0760

POLAND

Jotun Polska Sp.zo.o.
ul. Magnacka 15,
80-180 GDAŃSK KOWALE
Tel: +48 58 555 1515
Fax: +48 58 781 9692

RUSSIA

Jotun Paints O.O.O.
Varshavskaya Str., 23/2, Office 75
196128 ST. PETERSBURG
Tel: +7 812 640 00 80
Fax: +7 812 640 00 81

SAUDI ARABIA

Jotun Saudia Co. Ltd.
Jeddah Industrial City, Phase 3,
P.O. Box 34698, JEDDAH 21478
Tel: +966 2635 0535 / 2636 1271
Fax: +966 2636 2483

SINGAPORE

Jotun (Singapore) Pte. Ltd.
37 Tuas View Crescent
Singapore 637236
Tel: +65 650 882 88
Fax: +65 6265 7484

SOUTH AFRICA

Jotun Paints South Africa (PTY) Ltd.
Wimbledon Road, P.O.Box 187
BLACKHEATH 7581
Tel: +27 21 905 1070
Fax: +27 21 905 1652

SPAIN

Jotun Iberica S.A.
Poligon Santa Rita,
Calle Estatica no. 3,
08755 Castellbisbal,
BARCELONA
Tel: +34 937 711 800
Fax: +34 937 711 801

SWEDEN

Jotun Sverige AB
P.O. Box 151, Klangfärgsgatan 13,
421 22 VÄSTRA FRÖLUNDA
Tel: +46 3169 6300
Fax: +46 3169 6397

THAILAND

Jotun Thailand Ltd
Amata Nakom Ind. Estate (BIPII)
700/353 Moo 6 Tumbol
Donhualoh, Amphur Muang
CHONBURI 2000
Tel: +66 2 022 9888
Fax: +66 38 214 373/375

TURKEY

Jotun Boya San. ve Ticaret. A.S.
Balabandere Caddesi Hilpark Suites
Sitesi No.10, Istinye 34460 Sariyer
ISTANBUL
Tel: +90 21 2279 7878
Fax: +90 21 2279 2549

U. A. E.

Abu Dhabi
Jotun Abu Dhabi (LLC)
P.O. Box 3714, Mussafah
ABU DHABI
Tel: +971 2691 0700
Fax: +971 2551 0232

Dubai

Jotun U.A.E. Ltd. (LLC)
P.O. Box 3671,
Al Quoz Industrial Area
DUBAI
Tel: +971 4339 5000
Fax: +971 4338 0666

USA

Jotun Paints Inc.
9203 Highway 23, P.O. Box 159,
Belle Chasse, LA 70037
Tel: + 1 713 860 8241
Fax: +1 713 860 8242

VIETNAM

Jotun Paints (Vietnam) Co. Ltd.
Song Than Industrial. Zone,
No.1 Street 10,
Di An District, Binh Duong Province
Tel: +84 650 3742206
Fax: +84 650 374 2205

YEMEN

Jotun Yemen Paints Co. Ltd
P.O. Box 70183, Al Alam
ADEN
Tel: +967 2820 546-9
Fax: +967 2249 362

Jotun A/S

P.O. Box 2021,
N-3202 Sandefjord, Norway
Tel: +47 33 45 70 00
jotun.com



Jotun Protects Property